



**WICHITA COUNTY SALE FOR OCTOBER 29, 2024
SCHEDULED FOR 3:00 P. M.**

Tax Sales Information*

- 1) Tax foreclosure sales are conducted by the Sheriff or a Constable of the county where the property is located. The sale will take place at **1701 Kemp Blvd., Wichita Falls, Wichita County, Texas 76309.**
- 2) All sales are without warranty of any kind. Bidders should satisfy themselves concerning title and location of the property and improvements on the property including any encroachments *prior* to bidding. **Neither our firm nor our clients can guarantee the title to any property. The tax sale is an “as is”, “where is”, “buyer beware” sale. If you have any questions about specific liens or ownership of the property, you may research the title yourself or through a title company.**
- 3) For more information regarding the sheriff’s sale listed below, please contact Mollie Lerew in the Wichita Falls Office at (940) 723-4323.

SEIZED PROPERTY PURSUANT TO TAX WARRANT IN CAUSE NO. DC30-TX2024-2075, STYLED “IN RE THE DELINQUENT TAXES OF GUY’S FLOORS LLC AND RONNIE ABILA, JR. D/B/A GUY’S FLOORS”

Accu-Cut Arrow Carpet and Vinyl Cut & Roll Machine (Brockie International)
Forklift (Yale) with attachments (extensions and carpet pole).
Model GLC040SVXNUAE082. Serial No. C809V06168K
Floor polisher and/or sander
Air compressor (Quincy). Model H1214PN. Serial No. 20061014-0003
Pallet jack (Noblelift)
Assorted vinyl and carpeting
Scaffolding
Floor stripper (The Stripper Model 460 & 462)
Miscellaneous tools

*This notice and the materials provided herein are for informational purposes only and do not constitute any legal advice. No reader should rely on, act, or refrain from acting on the basis of any information contained in this notice without seeking their own legal or other professional advice. Perdue, Brandon, Fielder, Collins, & Mott. L.L.P. (“PBFCM”) [DOES NOT WARRANT](#) the quality or completeness of the information provided herein. The information in this notice is not intended to nor does it create any attorney-client relationship between the reader and PBFCM.



4921



OPERATOR'S MANUAL

ACCU-CUT ARROW

Carpet and Vinyl Cut & Roll Machine

**For Parts or Service contact
Accu-Cut Support 1-800-222-8288**

Brockie International Inc. 28114 County Road 561, Tavares, Florida 32778
voice 800.222.8288 • 352.742.0902 fax 352.742.0702
e-mail: info@accu-cut.com • www.accu-cut.com





Printed label with text and a barcode, likely a shipping or inventory label.

Control panel with a digital display and buttons. The display shows the number "12345". The panel includes a power switch and a "Feed Size" knob. The brand name "Dymo" is visible on the right side of the panel.



Yale

GUY'S FLOORS

WARNING

**Trained Operators and
Mechanics Only**



Read Operating
Manual located
on seat or in
operators
compartment

Failure to follow operating,
inspection, and maintenance
instructions can cause
serious injury or death!

**CAPACITY WITH MAST
VERTICAL AND
EQUIPPED AS SHOWN**

Yale

Lift Truck Model GLC040SVXNUE082
Serial No. C809V06168K

Attachment: 907 mm (35.7 in) SS Crg + 1067 mm (42 in) Forks

Truck Weight 3280 kg (7240 lb)

Tread Width 819 mm (31.9 in)

Back Tilt 5.0 Degrees

Tire Front

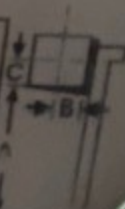
Size 18X7X12-1/8 Cushion

Pressure —

Rear

18X5X11-1/4 Cushion

MAXIMUM CAPACITY	Load Height Dim. A	Load Center	
		Dim. B	Dim. C
1450 kg (3200 lb)	4750mm (187 in)	610 mm (24 in)	610 mm (24 in)
1700 kg (3750 lb)	4150 mm (163.4 in)	610 mm (24 in)	610 mm (24 in)





GUY'S FLOORS

Yale



Handwritten text on a white box, possibly a label or inventory tag.

Handwritten text on a green tag, possibly a price or identification label.

Handwritten text on a green tag, possibly a price or identification label.





Yale

Yale

GUY'S FLOORS





50V

TRUE BL. RELIABILITY
POUEYCK
MADE IN U.S.A.
DESIGN BELLFLOW

DANGER	PELIGRO	ATTENTION	CAUTION	PERICOLO

MODEL

H1214PN

SERIAL NO.

20061014-0003

110831



Quincy

COMPRESSOR

quincycompressor.com





5500LBS

NOBLELIFT

Item: 0158104481

Core 14411

COREtecFloors.com







DO NOT STACK MORE
THAN 4 PALLETS HIGH

Luxury Vinyl Planks

Luxury Vinyl Planks

Luxury Vinyl Planks

Luxury Vinyl Planks

Luxury Vinyl Planks

Luxury Vinyl Planks

Luxury Vinyl Planks

Luxury Vinyl Planks

Luxury Vinyl Planks

Luxury Vinyl Planks

Luxury Vinyl Planks

Luxury Vinyl Planks

Luxury Vinyl Planks

Luxury Vinyl Planks

Quick step
60 bxs





Husqvarna

TILEM

